

## Ultra Low Capacitance ESD Protection Array

### DESCRIPTION

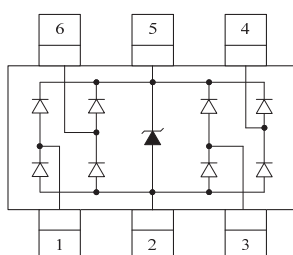
The TEP0504DLC provides a typical line to line capacitance of 0.3pF and low insertion loss up to 3GHz providing greater signal integrity making it ideally suited for USB 2.0 applications, such as Digital TVs, DVD players, Computing, set-top boxes and MDDI applications in mobile computing devices.

This series has been specifically designed to protect sensitive components which are connected to high-speed data and transmission lines from overvoltage caused by ESD(electrostatic discharge), CDE (Cable Discharge Events),and EFT (electrical fast transients).

### ORDERING INFORMATION

- ✧ Device:TEP0504DLC
- ✧ Package: SOT-23-6L
- ✧ Marking: Y B05
- ✧ Material: Halogen free
- ✧ Packing: Tape & Reel
- ✧ Quantity per reel: 3,000pcs

### PIN CONFIGURATION



### FEATURES

- ✧ Protects four I/O lines and one Vcc line
- ✧ Low capacitance
- ✧ Working voltages : 5V
- ✧ Low leakage current
- ✧ Low capacitance (<1.0pF) for high-speed interfaces
- ✧ No insertion loss to 3.0GHz
- ✧ Response Time is < 1 ns
- ✧ Meets MSL 1 Requirements
- ✧ Solid-state silicon avalanche technology
- ✧ ROHS compliant

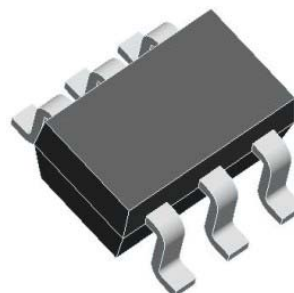
### MACHANICAL DATA

- ✧ SOT-23-6L package
- ✧ Flammability Rating: UL 94V-0
- ✧ Terminal: Matte tin plated.
- ✧ Packaging: Tape and Reel
- ✧ High temperature soldering guaranteed:260°C/10s
- ✧ Reel size: 7 inch

### APPLICATIONS

- ✧ High Definition Multi-Media Interface (HDMI)
- ✧ Digital Visual Interface (DVI)
- ✧ USB 1.1/2.0/3.0/OTG
- ✧ IEEE 1394 Firewire Ports
- ✧ Notebooks & Handhelds
- ✧ Projection TV & Monitors
- ✧ Set-top box
- ✧ Flat Panel Displays
- ✧ PCI Express

### PACKAGE OUTLINE

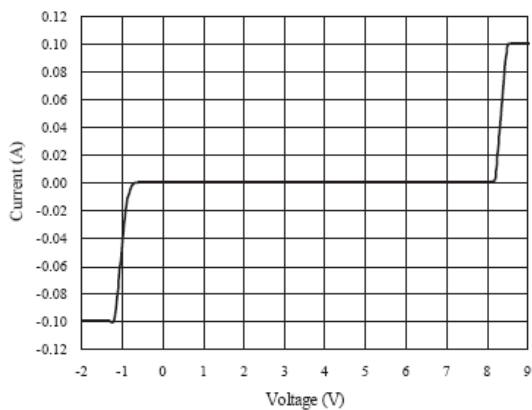


<b>ABSOLUTE MAXIMUM RATING</b>			
<b>Symbol</b>	<b>Parameter</b>	<b>Value</b>	<b>Units</b>
$I_{PP}$	Peak Pulse Current (8/20 $\mu$ s)	2	A
$V_{ESD}$	ESD per IEC 61000-4-2 (Air) ESD per IEC 61000-4-2 (Contact)	$\pm 27$ $\pm 16$	kV
$T_{OPT}$	Operating Temperature	-55/+125	$^{\circ}$ C
$T_{STG}$	Storage Temperature	-55/+150	$^{\circ}$ C

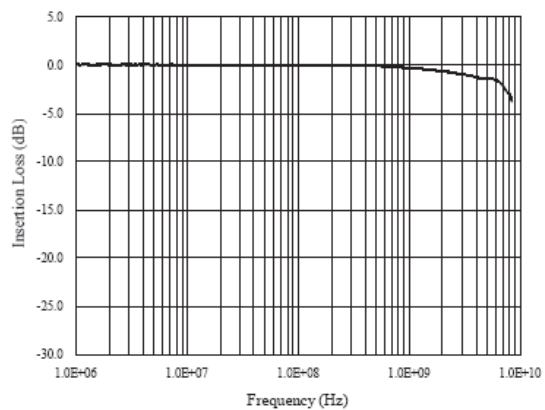
<b>ELECTRICAL CHARACTERISTICS (<math>T_{amb}=25^{\circ}</math>C)</b>						
<b>Symbol</b>	<b>Parameter</b>	<b>Test Condition</b>	<b>Min</b>	<b>Typ</b>	<b>Max</b>	<b>Units</b>
$V_{RWM}$	Reverse Working Voltage	Any I/O pin to GND			5.0	V
$V_{BR}$	Reverse Breakdown Voltage	$I_T = 1\text{mA}$ Any I/O pin to GND	6.0		10.0	V
$I_R$	Reverse Leakage Current	$V_{RWM} = 5\text{V}$ Any I/O pin to GND			1	$\mu$ A
$V_C$	Clamping Voltage	$I_{PP} = 1\text{A}$ , $t_p = 8/20\mu\text{s}$ Any I/O pin to GND			12	V
$C_{J1}$	Junction Capacitance 1	$V_R = 0\text{V}$ , $f = 1\text{MHz}$ Between I/O pins		0.30	0.40	pF
$C_{J2}$	Junction Capacitance 2	$V_R = 0\text{V}$ , $f = 1\text{MHz}$ Any I/O pin to GND		0.60	0.80	pF

## RATING AND CHARACTERISTICS CURVES (TEP0504DLC)

### Voltage Sweeping of I/O to GND

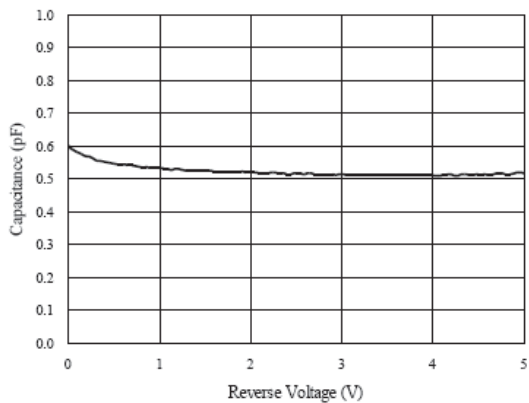


### Insertion Loss S21 of I/O to GND

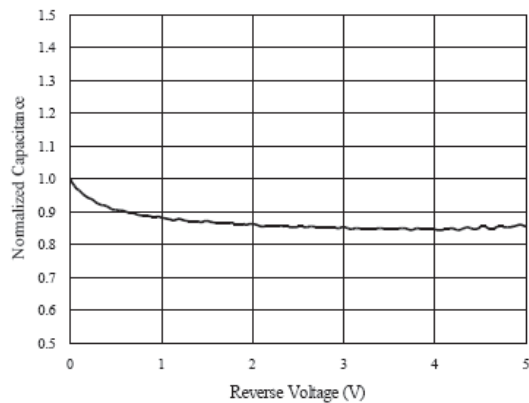


### Capacitance vs. Voltage of I/O to GND (f = 1MHz)

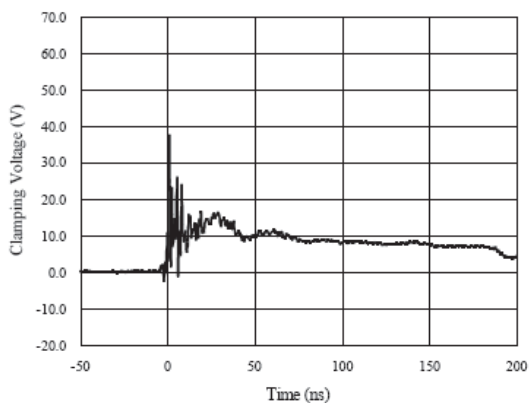
#### Capacitance vs. Reverse Voltage



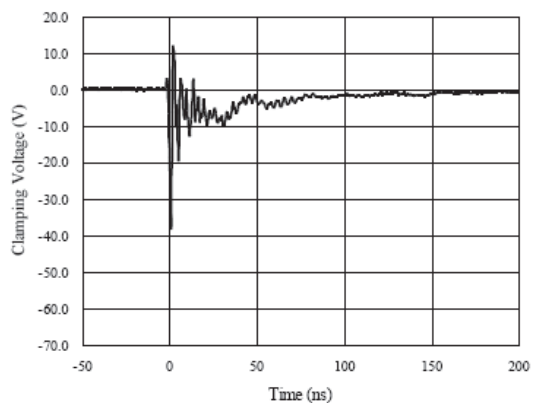
#### Normalized Capacitance vs. Reverse Voltage



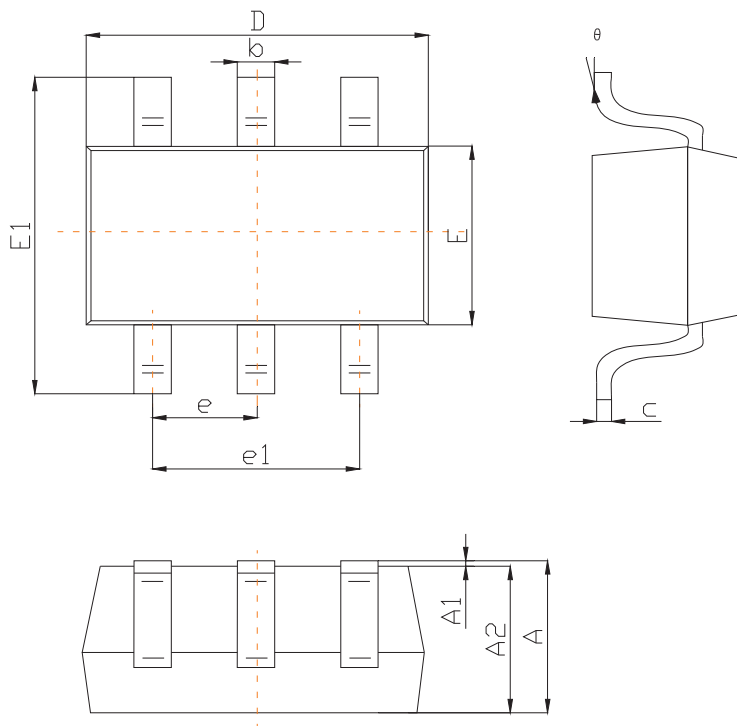
### ESD Clamping of I/O to GND (+8kV Contact per IEC 61000-4-2)



### ESD Clamping of I/O to GND (-8kV Contact per IEC 61000-4-2)



## SOT-23-6L PACKAGE OUTLINE DIMENSIONS



Symbol	Dimensions In Millimeters		Dimensions In Inches	
	Min	Max	Min	Max
A	1.050	1.250	0.041	0.049
A1	0.000	0.100		0.004
A2	1.050	1.150	0.041	0.045
b	0.300	0.500	0.012	0.020
c	0.100	0.200	0.004	0.008
D	2.820	3.020	0.111	0.119
E	1.500	1.700	0.059	0.067
E1	2.650	2.950	0.104	0.116
e	0,950(BSC)		0.037(BSC)	
e1	1.800	2.000	0.071	0.079
L	0.300	0.600	0.012	0.024
	0°	8°	0°	8°

## DISCLAIMER NOTICE

Rectron Inc reserves the right to make changes without notice to any product specification herein, to make corrections, modifications, enhancements or other changes. Rectron Inc or anyone on its behalf assumes no responsibility or liability for any errors or inaccuracies. Data sheet specifications and its information contained are intended to provide a product description only. "Typical" parameters which may be included on RECTRON data sheets and/ or specifications can and do vary in different applications and actual performance may vary over time. Rectron Inc does not assume any liability arising out of the application or use of any product or circuit.

Rectron products are not designed, intended or authorized for use in medical, life-saving implant or other applications intended for life-sustaining or other related applications where a failure or malfunction of component or circuitry may directly or indirectly cause injury or threaten a life without expressed written approval of Rectron Inc. Customers using or selling Rectron components for use in such applications do so at their own risk and shall agree to fully indemnify Rectron Inc and its subsidiaries harmless against all claims, damages and expenditures.